

Ganas de hacer lo que otros hacen con Linux aircrack, ethereal u similares???

fuelle: <http://screammy.name/projects/kismacmacbook/>

HOWTO: Compile, install, and run KisMAC in passive mode on a MacBook

Why?

The current distribution of KisMAC does not allow you to use the AirPort Extreme card in passive mode, capture packets, etc.

Please keep in mind, this howto uses the latest development version of KisMAC, it may crash without warning.

UPDATE 09/05/2007 -- I've modified this for the SVN location change.

1. Download and install Xcode

- a. If you don't have an Apple Developer Connection account, create one [here](#) .
- b. Download and install Xcode from [here](#) . Use the account you just created to access the download.

2. Get subversion

You have a couple options to get subversion.

Option 1 (.dmg pre-built binary):

- a. Download the latest .dmg from [here](#) .
- b. Install it.

Option 2 (darwinports):

- a. Download and install darwinports from [here](#) . It's the first link, "for Tiger (Universal)".
- b. After you install darwinports, open terminal.app and run the following commands, exactly as shown:

NOTE: if you are running PeerGuardian, disable the filters

```
cd; echo 'export PATH=$PATH:/opt/local/bin' >> .profile
source .profile
sudo port selfupdate
sudo port sync
sudo port install subversion
```

Option 3 (fink):

I don't use fink but it will work to get subversion; fink's site is [here](#) .

Final (test subversion):

- a. Open Terminal.app
- b. Type "svn" and hit enter. If you see the output listed next, subversion is installed. Type 'svn help' for usage.

3. Download and compile KisMAC

- a. Open Terminal.app
- b. Type the following commands, exactly as shown:
NOTE: You should be a local administrator of the mac

```
cd Desktop
mkdir KisMAC.src
cd KisMAC.src
svn co http://kismac-ng.googlecode.com/svn/trunk/
NOTE: svn will ask you to accept the SSL cert from the site before it continues, type 't' and hit enter for temporarily. Subversion will now download the source tree.
cd trunk
./compile.command image
NOTE: this script will compile KisMAC using Xcode.
```

KisMAC will now be compiled in a folder on your desktop, KisMAC.src/trunk/build/Universal/

Install KisMAC

NOTE: if you already have KisMAC installed, you must remove it. Drag KisMAC.app from Applications to your trash

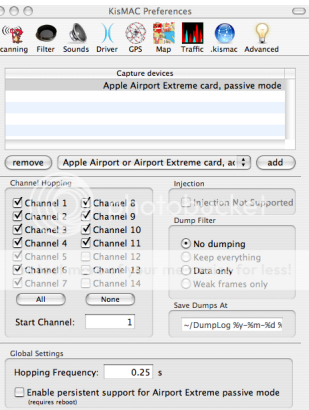
- a. Open finder and navigate to the newly compiled KisMAC.app, Desktop->KisMAC.src->trunk->build->Universal
- b. Drag KisMAC.app to Applications

Configure and use

- a. Open KisMAC.app from Applications
 - b. Click KisMAC->Preferences
 - c. Click Driver
 - d. Select the one capture device listed, "Apple Airport or Airport Extreme card, active mode", and click remove
 - e. Expand the drop down next to "remove", select "Apple Airport Extreme card, passive mode", and click "add"
- Your preferences should look like this:

Compile, install, and run KisMAC in passive mode on a MacBook

Escrito por Dr. Arroyo
Sábado, 22 de Marzo de 2008 09:41 -



the first time the network appears will be packets being captured

